



NPMS and Its Importance to PHMSA Field Operations

NPMS Public Meeting

Arlington, Virginia

November 17, 2014

Chris Hoidal



Is Proposed Information Necessary to Improve Department's Performance?

- Inspection Planning and Resource Allocation
- Determination of Inspection Scope
- Record and Integrate Inspection Results
- Better Coordination with Operators
- Improved Response to the Public



Inspection Planning and Resource Allocation

- Relevant and accurate NPMS data is critical to populating PHMSA's relative risk inspection model (RRIM) for scheduling pipeline system audits.
- PHMSA can geographically deploy inspection resources by knowing where the highest-risk pipeline systems are.



NPMS utilized for RRIM

	A	B	C	D	E	F	G	H	I	J	K
						Unit	Pre 1970s	Pre 1970s	Commodity	Bare	Ineffective
	IS Score	OpID	Operator Name	Unit ID	Unit Name	Mileage	LFERW	LFERW	Threat Weight	Pipe	Coating
							Weight (0-3)	Mileage	(Crude – 6, Products – 6, GT - 3, HVL – 3, CO2 – 1)	Weight	Weight
2	1	117	AIR PRODUCTS &	10785	OO-LOS ANGELES	129	0	0	1	0	0
3	1	31475	TRINITY PIPELINE GP	11884	HOBBS FACILITY	46	0	0	1	0	0
4	1	207	ALASKA PIPELINE CO	2645	KENAI	160	0	0	1	0	0
5	1	207	ALASKA PIPELINE CO	82641	ANCHORAGE	8	0	0	1	0	0
6	1	207	ALASKA PIPELINE CO	11105	BELUGA	28	0	0	1	0	0
7	1	207	ALASKA PIPELINE CO	61135	HAPPY VALLEY	231	0	0	1	0	0
8	1	994	WILLIAMS FIELD SERVICES - GULF	65674	SEAHAWK PIPELINE	0	0	0	1	0	0
9	1	300	PLAINS PIPELINE, L.P.	17534	FERRIDAY SYSTEM	10	0	0	1	0	0
10	1	300	PLAINS PIPELINE, L.P.	1882	MS, AL	14	0	0	1	0	0
11	1.5	300	PLAINS PIPELINE, L.P.	1872	MS, LA	100	0	0	1	0	0
12	1.5	300	PLAINS PIPELINE, L.P.	75025	MS (INTRASTATE)	0	0	0	3	0	0
13	1.5	31189	BP PIPELINE (NORTH	74779	OFFSHORE GAS -	0	0	0	3	0	0
14	1.5	300	PLAINS PIPELINE, L.P.	33175	CSFM #1050A	0	0	0	3	0	0
15	2	6345	GEORGIA PACIFIC LLC - CROSSETT PAPER	11092	LA & AR	9	0	0	1	0	0
16	2	30711	HILCORP ENERGY	27354	OFFSHORE GAS	91	0	0	1	0	0
17	2	31543	TRANS-UNION INTERSTATE PIPELINE,	40334	TRANS-UNION INTERSTATE	20	0	0	1	0	0
18	2.5	31591	STONE ENERGY	19264	OFFSHORE GAS	0	0	0	3	0	0
19	3	32243	LA STORAGE, LLC	74299	LIBERTY GAS	15	0	0	3	0	0
20	3	32345	CAMERON	72776	CAMERON	15	0	0	3	0	0
21	3	32396	BOBCAT GAS STORAGE	72977	BOBCAT STORAGE	115	0	0	3	0	0
22	3	32437	KINDER MORGAN LOUISIANA PIPELINE	71994	LOUISIANA PIPELINE	112	0	0	3	0	0



Determine Scope of Inspection

- Ability to focus on recent changes – MOP change, recent assessments
- Use Data from new NPMS attributes to determine inspection focus
- Determine which pipeline assets to physically inspect – Examples:
 - ROW conditions at river crossings and landslide areas
 - Class Location verification in developing areas
 - CP readings at areas of potential AC interference
 - Review ILI surveys conducted after parallel construction



Timely Response to Environmental Changes

- Enhances the inspection by **focusing** at the characteristics of a pipeline system and the interrelationship with environmental factors and nearby structures
 - Housing Development along the pipeline ROW that may change IMP program or require class location change outs
 - Transportation Development along the pipeline ROW (Power lines, Light Rail, Road work, etc.) that necessitate changes to damage prevention, CP, assessment intervals.
 - Flooding which change the river flow patterns thereby requiring depth of cover surveys or enhanced valving.



Planning of Inspection Focus

GROUPS
CLICK TO DRILL DOWN

	Unit 8365	Unit 8365	Unit 3675	Unit 8375	Unit 8355
Assessment and Repair					
CRM, SCADA, and Leak Detection					
Design and Construction					
Emergency Preparedness and Response					
Facilities and Storage					
Integrity Management					
Maintenance and Operations					
Public Awareness and Damage Prevention					
Reporting					
Screening					
Time-Dependent Threats					
Training and Qualification					

Plans

▶ GT IM Implementation (2/2013)	for All Groups	for All Assets	240
▶ AR.CDA.CDAINDICATION.R	for All Assets		5
▶ 2 Questions	for All Assets		10
▶ AR.IC.ICDADIRECT.R	for All Assets		5
▶ 4 Questions	for All Assets		20
▶ 2 Questions	for All Assets		10
▶ AR.OT.OTDEFECTCAT.R	for All Assets		5
▶ 3 Questions	for All Assets		15
▶ 8 Questions	for All Assets		40

Plan Implementations

▶ Pasco District	Start	End	38
▶ Sumas District	Start	End	38
▶ Redmond District	Start	End	38
▶ Battleground District	Start	End	38
▶ Spokane District	Start	End	38
▶ Records Review	10/20/2014	10/24/2014	205

[New Implementation Activity](#)



Skeleton on Which to Document Inspection Observations

- With the use of hand-held GPS units and Smart Phones, the inspector is able to capture precise locations and times of areas inspected and record results in NPMS.
- Provides better documented enforcement cases for PHMSA BUT COULD ALSO support operator activities and actions.
 - ROW clearing needed, signage recently there, etc.
 - Encroachment, Flooding, Landslides

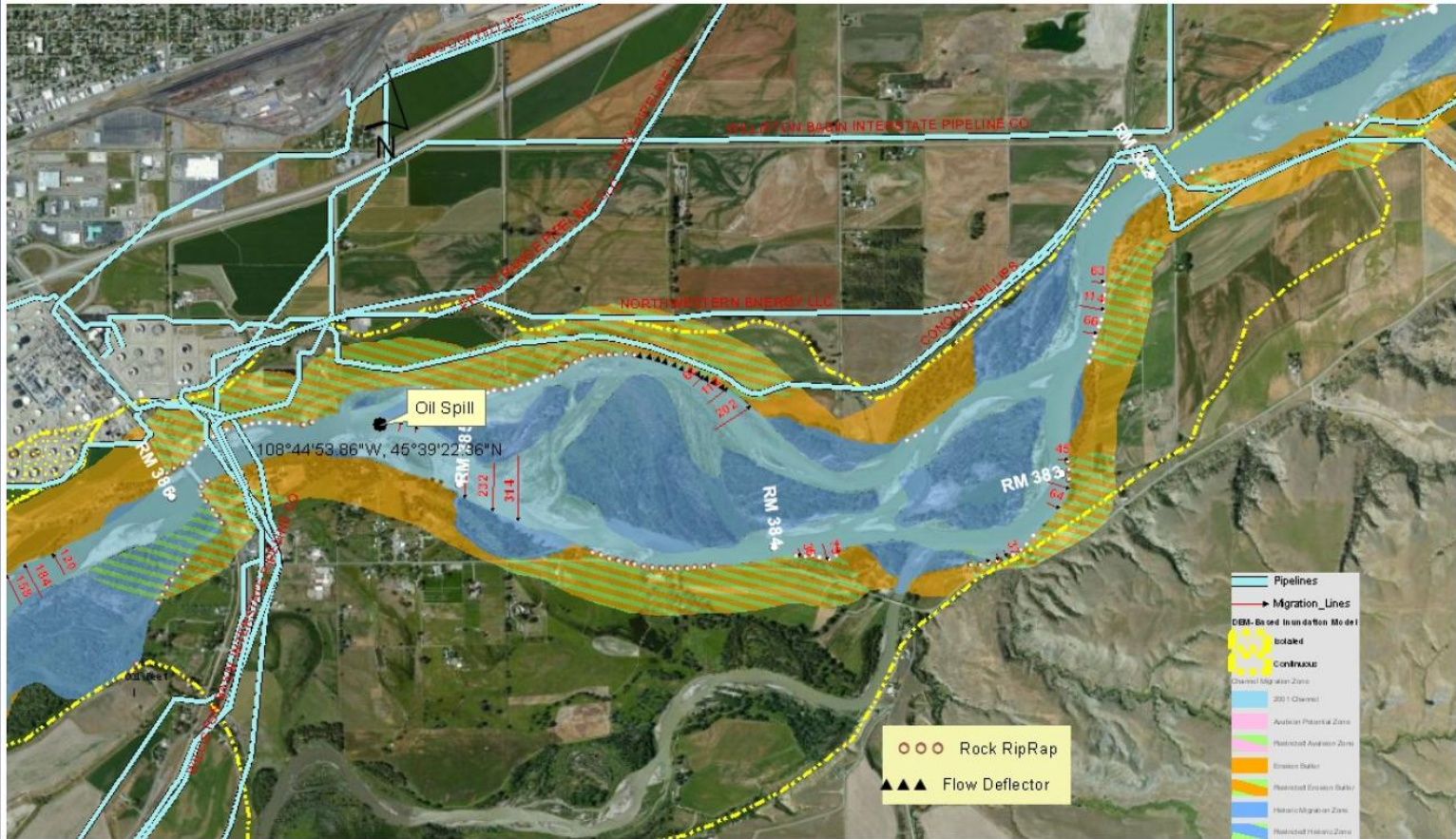


Enhance Emergency Response

- PHMSA responders are able to use LAT/LONG coordinates to locate incident on NPMS and quickly deploy.
- Anticipate potential impacts to public and ESAs.
- SYNC EXPECTATIONS DURING INCIDENT - Improves PHMSA engagement with First Responders, public, government, AND nearby P/L operators.
- Ability to access and validate Facility Response Plans and meaningfully engage with the Incident Command System.



Incident Follow-up





How does PHMSA NPMS data help pipeline operators?

- Improve Inspection Efficiency
 - PHMSA will spend less time with operator doing pre-inspection planning and risk screening, and more time conducting field inspections.
 - Inspections will focus on those areas with higher probability of releases or higher consequences should a release occur.
 - Timing of inspections and validation of Operator Programs improved by scheduling them AFTER IMP assessments



How does PHMSA NPMS data help pipeline operators?

- Operator safety programs improved
 - Operators can utilize non-sensitive NPMS information from other, nearby pipeline operators to enhance their O&M and Integrity Management programs.
- Communications Improved During Emergency Response
 - Operators, PHMSA, and local responders will have access to similar mapping information during and after an incident.
- Aid in due diligence process when transferring assets



NPMS Data and Public Inquiries

- Public Awareness of Pipeline Locations
 - Prospective land purchasers can be knowledgeable regarding pipeline details in area
 - Land owners and community inquiries can be answered 7X24
 - Tool to assist state and local governments in development and site planning
- Whistleblower/Public Complaints
 - Reduce uneducated complaints that consume essential resources



Questions?

Chris Hoidal, Western Region Director

Phone: 720-963-3171

Email: chris.hoidal@dot.gov