

A photograph of a farm with two wind turbines and several barns under a clear blue sky. The wind turbines are white with three blades each. The barns are dark blue with light-colored roofs. The foreground is a green field with some dry grass.

# Pipeline Safety and Public Official Stakeholders

**Pipeline Safety: Public Workshop on Public Awareness**

July 13, 2016

Chicago, IL

**WHO/ WHERE:** Brookings County, SD

Population: 33,897 persons, 85,000 cattle

## Transmission Pipeline Operators

- Northern Natural Gas Company
- Basin Electric Power Cooperative

## Distribution Pipeline Operator

- Northwestern Energy

Demonstrate that PIPA  
can be implemented locally

**WHAT:** Develop a Pipeline Safety  
Appendix to the Brookings County  
Zoning Ordinance

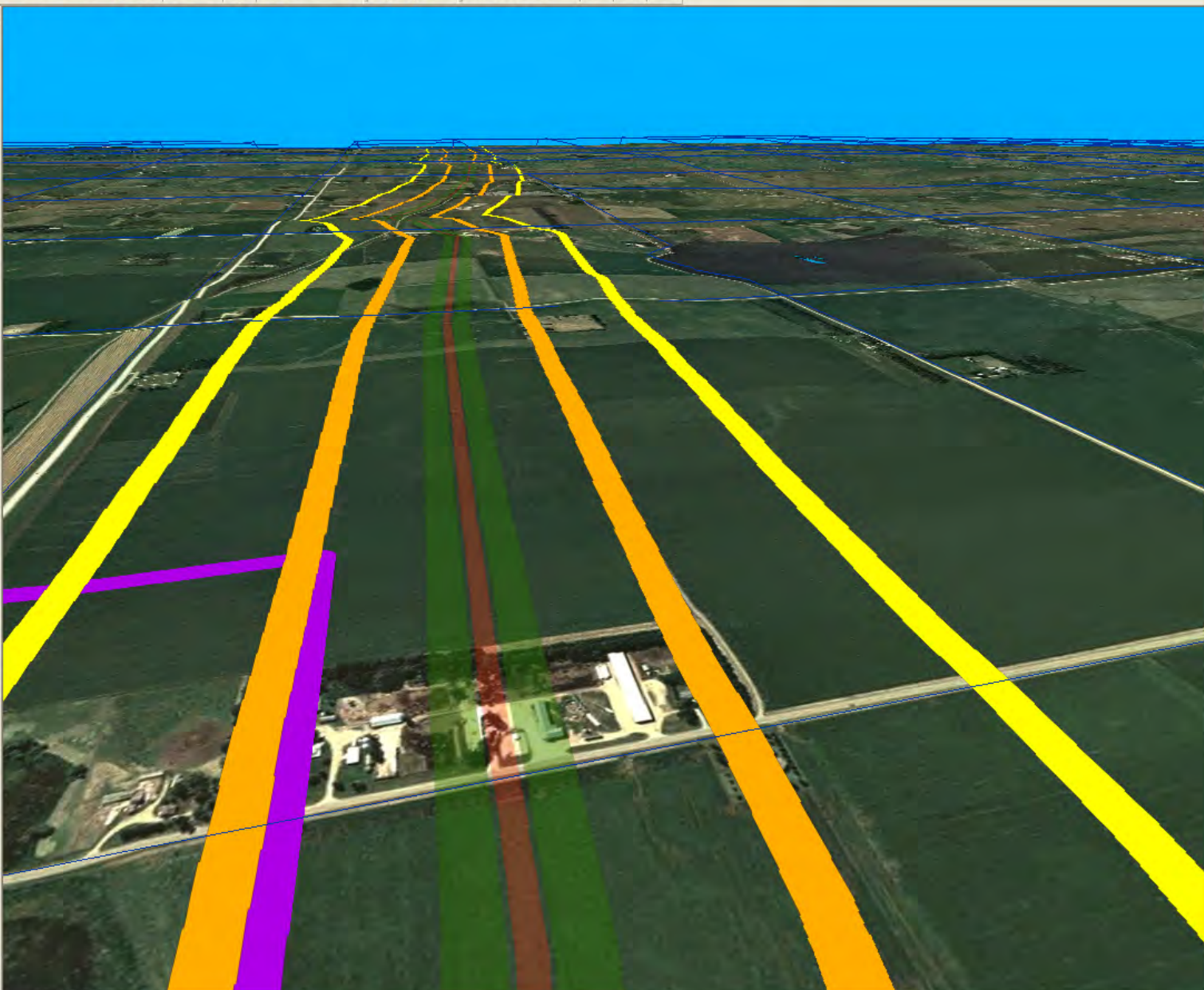
**WHEN:** June 1 – November 30, 2009

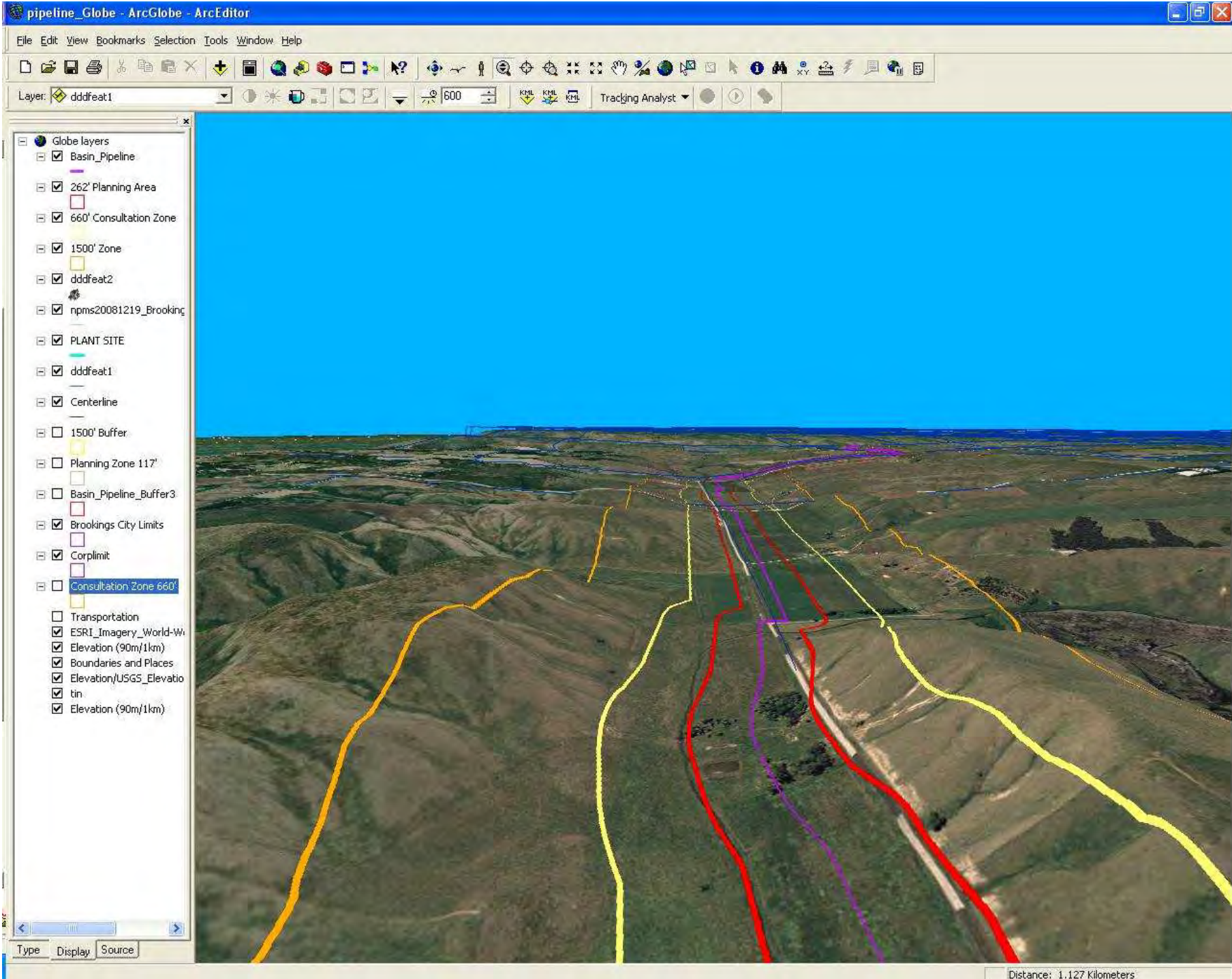
**WHY:** Public Safety and Awareness

# BL04 and BL05

- BL04: Consultation Zone Ordinance Recommended
- BL05: Define Consultation Zone

- Globe layers
  - dddfeat2
  - npms20081219\_Brookings
  - PLANT SITE
  - Basin\_Pipeline
  - dddfeat1
  - Centerline
  - 1500' Buffer
  - Planning Zone 117
  - Consultation Zone 660'
  - Basin\_Pipeline\_Buffer3
  - Basin\_Pipeline\_Buffer2
  - Basin\_Pipeline\_Buffer1
  - Basin\_Pipeline\_Buffer
  - Brookings City Limits
  - Corplimit
  - Transportation
  - ESRI\_Imagery\_World-W
  - Elevation (90m/1km)
  - Boundaries and Places
  - Elevation/USGS\_Elevatio
  - tin

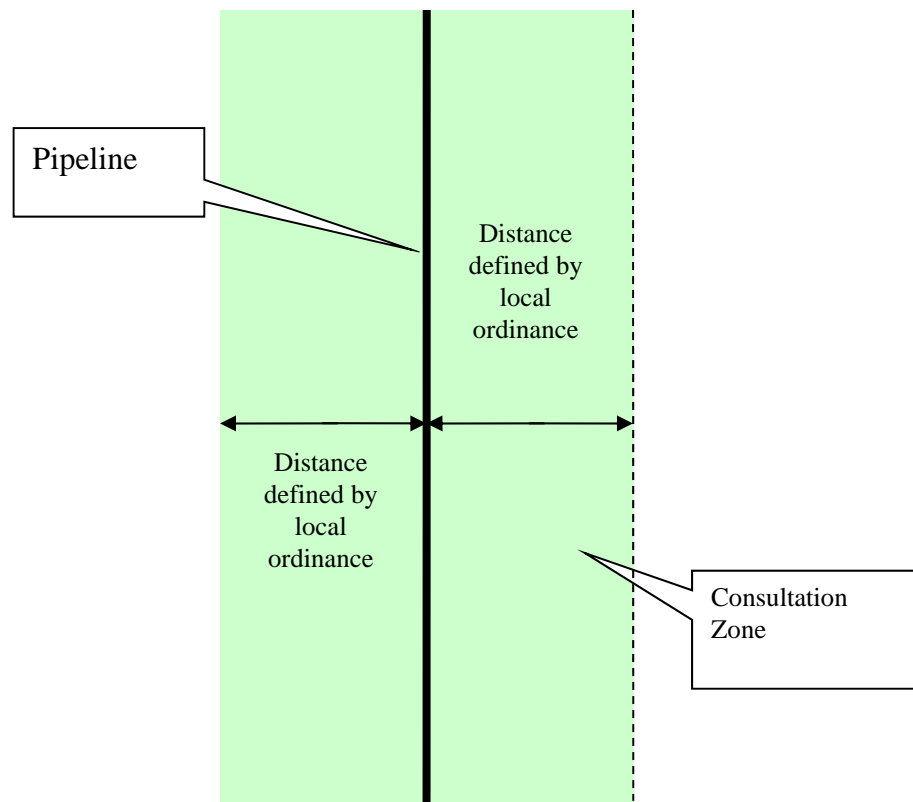




# Consultation Zone

Absent site-specific information

- 660-1000 feet Natural Gas Pipelines
- 1000-1500 Hazardous Liquid Pipelines

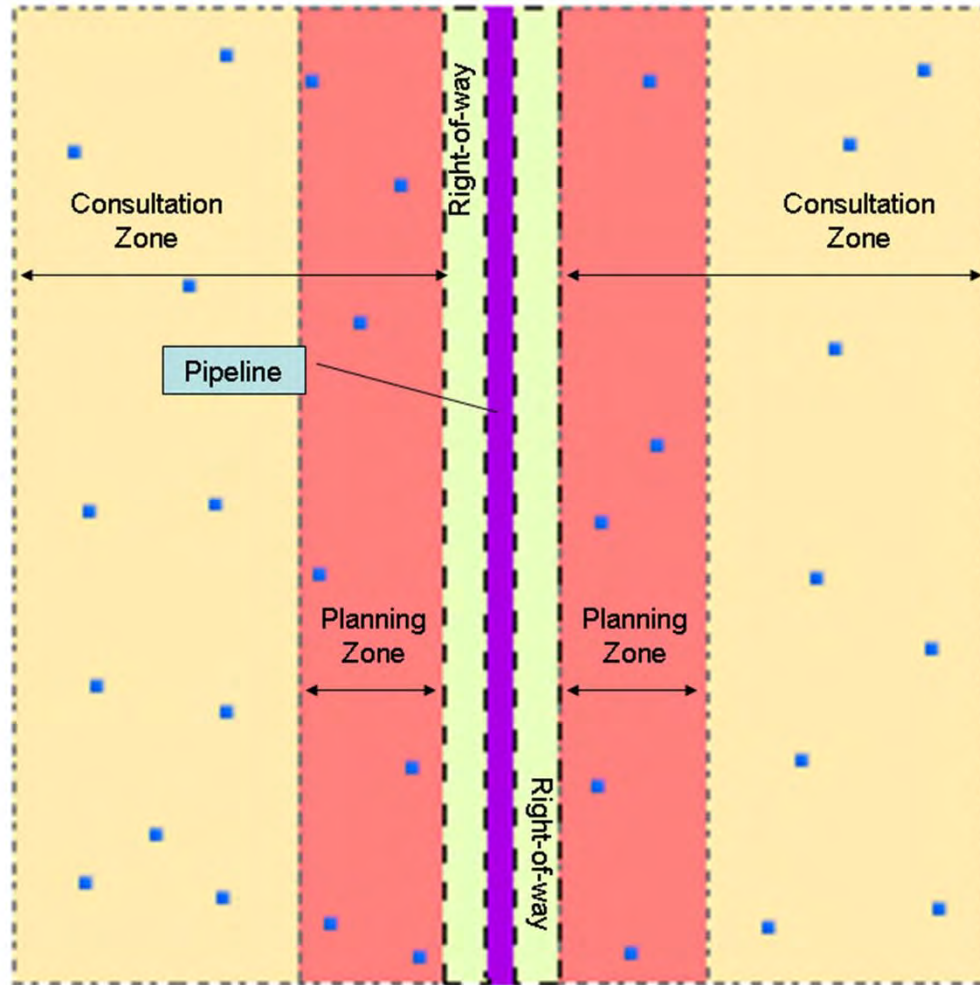


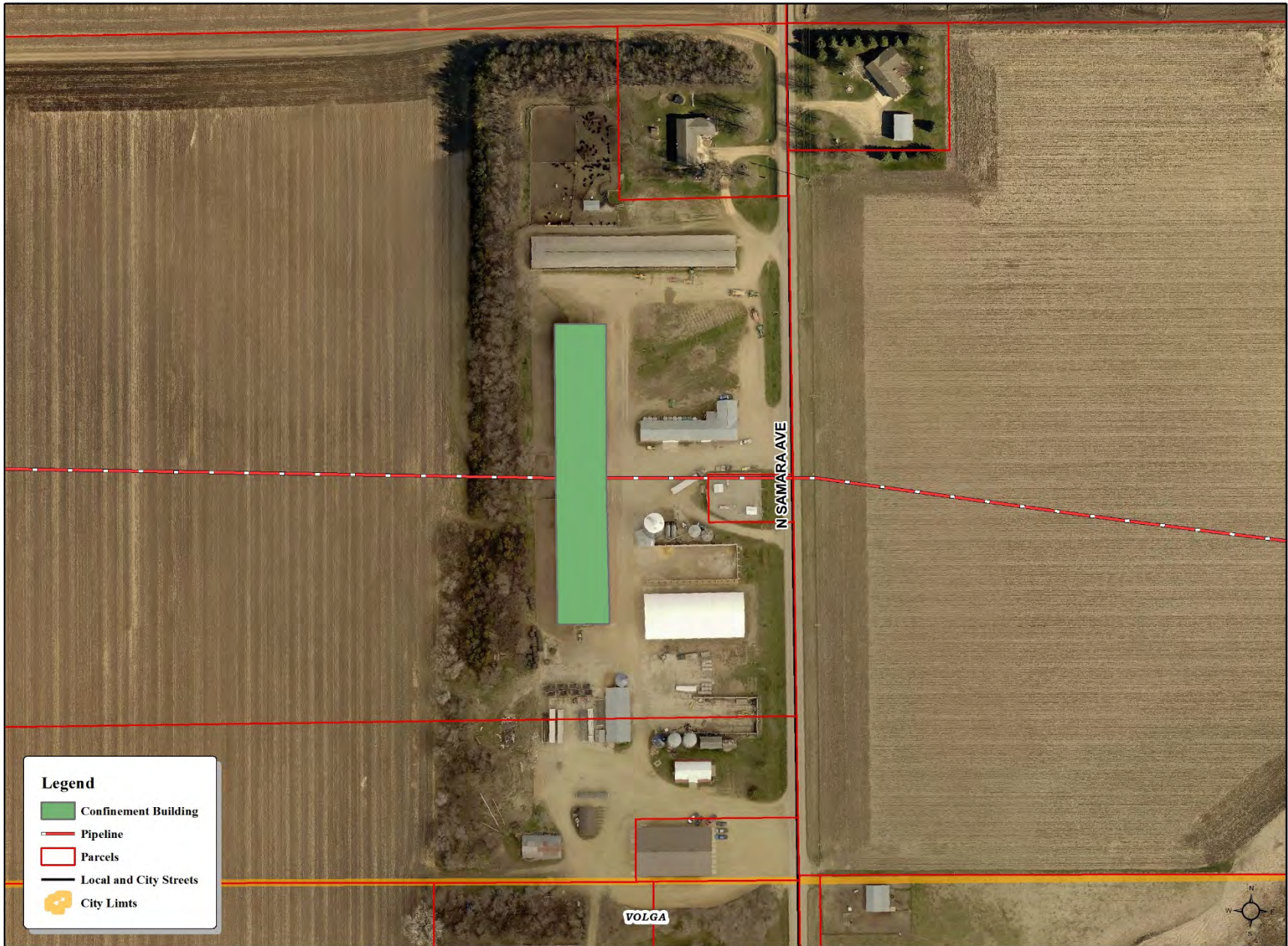
BL06

Local Governments Adopt a Planning  
Zone for Property Developers/Owners



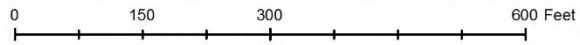
# Planning Zone

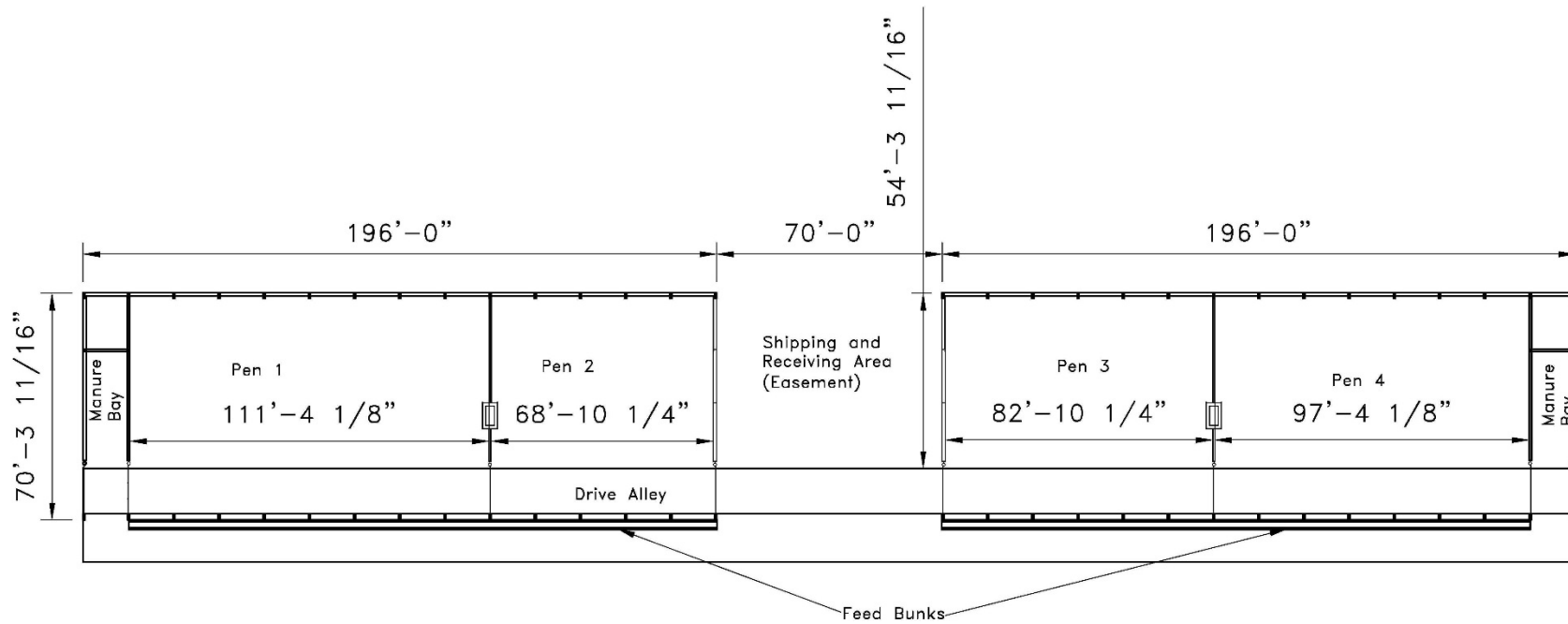




**Legend**

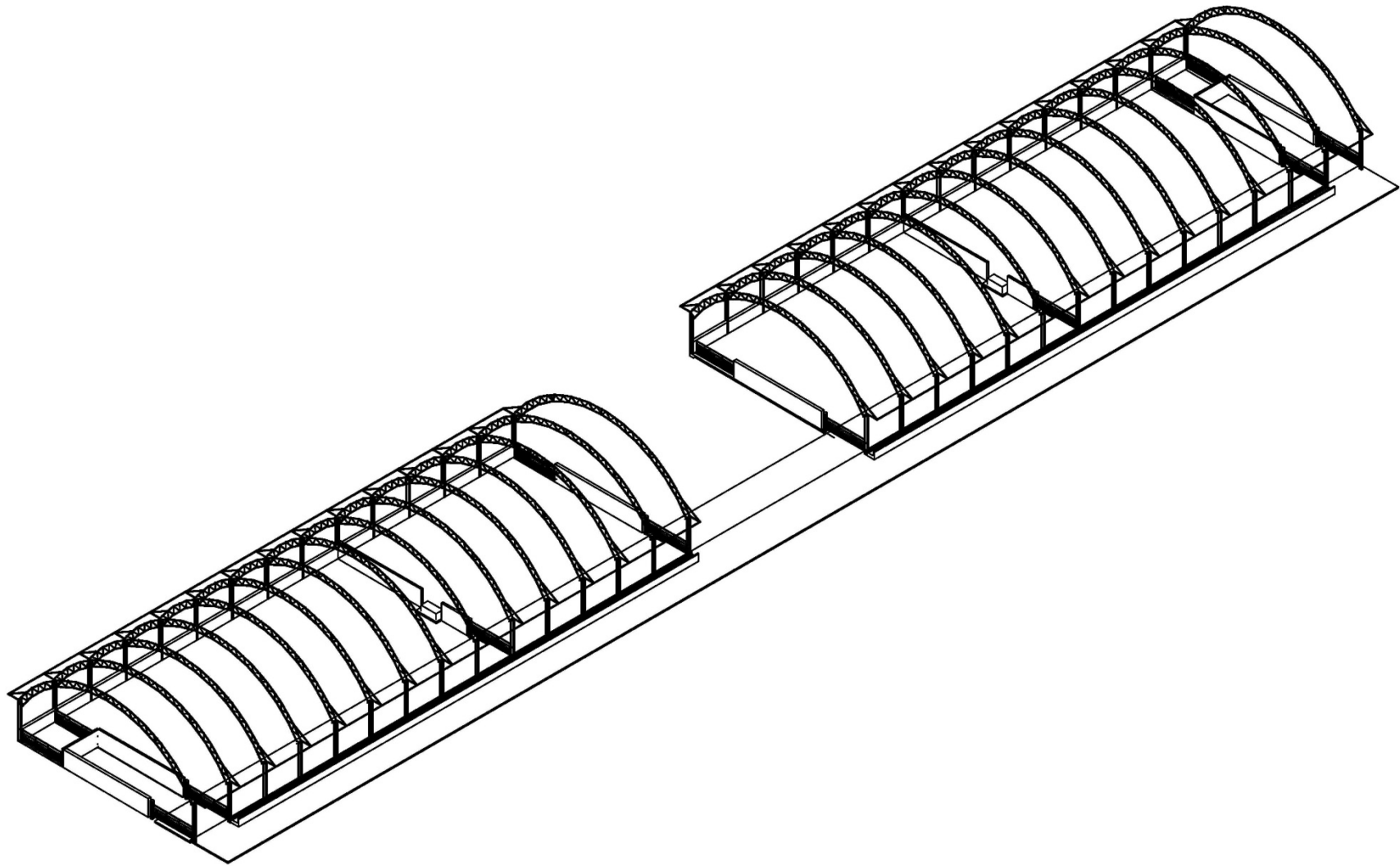
- Confinement Building
- Pipeline
- Parcels
- Local and City Streets
- City Limits





## PLAN LAYOUT

\*\* DO NOT SCALE  
 \*\* DO NOT CONSTRUCT FROM THIS DRAWING  
 \*\* PRELIMINARY DRAWINGS ONLY

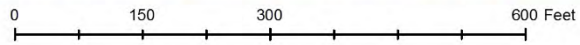


\*\* DO NOT SCALE  
\*\* DO NOT CONSTRUCT FROM THIS DRAWING  
\*\* PRELIMINARY DRAWINGS ONLY



**Legend**

- Pipeline
- ▭ Parcels
- Local and City Streets
- City Limits



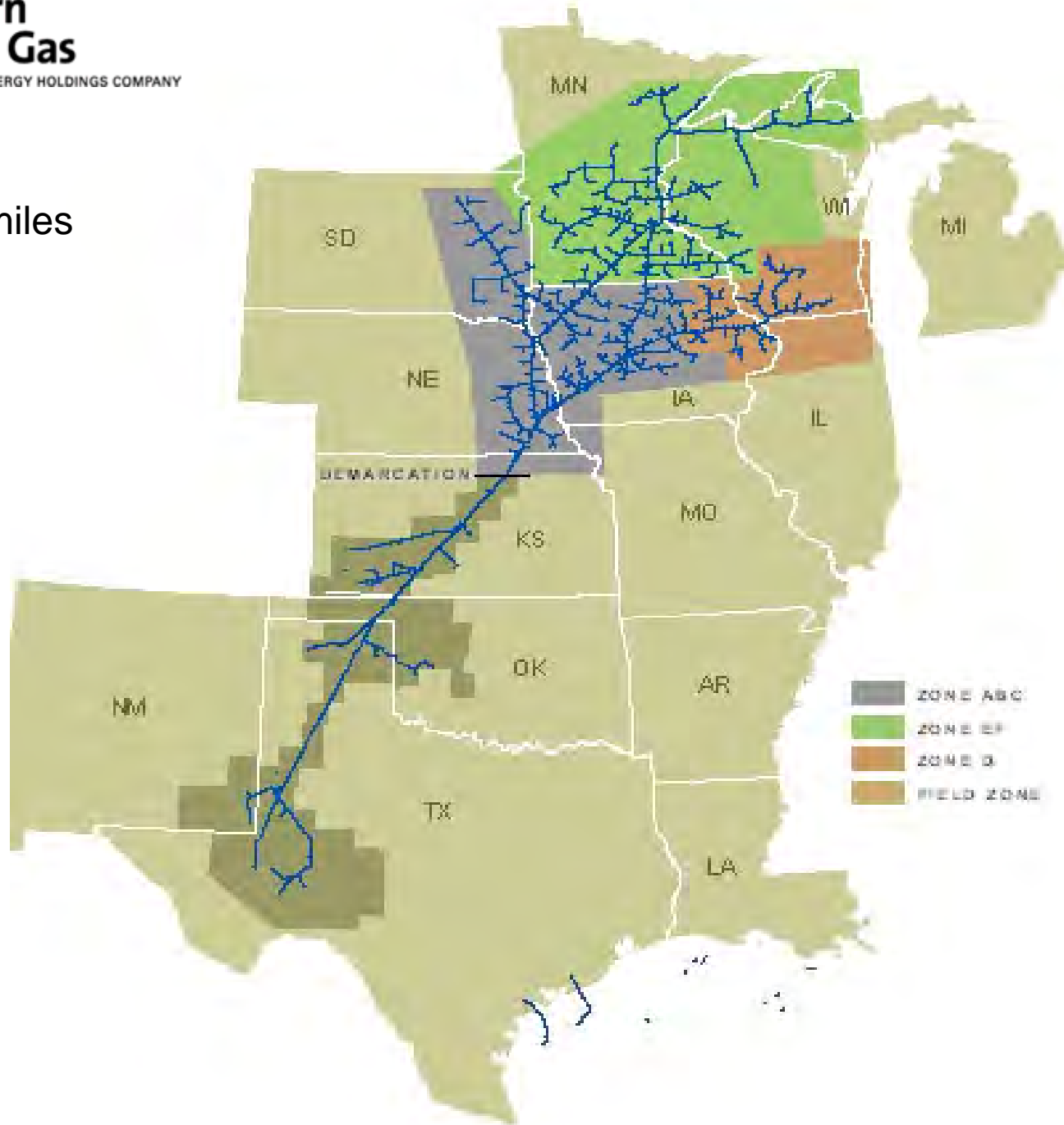
## Key Players (2009)

Brookings County Commission	Brookings City/County Planning Commission
City of Volga	Fire Department Brookings and Volga
Dakota, Minnesota and Eastern Railroad (CP)	148 landowners
Basin Electric Power Coop	Northern Natural Gas Company

# Key Players (2016)

Brookings County Commission	Brookings City/County Planning Commission
City of Brookings City of Volga	Fire Departments Arlington, Astoria, Brookings, Toronto, Volga and White
Rapid City, Pierre and Eastern Railroad (RCPE)	Approximately 30,000 citizens
Basin Electric Power Coop (BEPC)	Northern Natural Gas Company (NNGC)
	Northwestern Energy

16,600 miles





# Developers Handbook



## Deer Creek Station

Located in Brookings County near Elkton, SD, Deer Creek Station is a 300-net megawatt capacity combined-cycle power plant. The \$405-million Deer Creek Station began commercial operation in 2012. There are 28 full-time employees at the plant.

The power plant uses natural gas delivered via the Northern Border Pipeline and a new 14-mile underground pipeline to the plant. The gas is purchased from Dakota Gasification Company.

Deer Creek is connected to the electric grid by less than one mile of new 345-kilovolt transmission line. The plant features two turbine-generator sets: one turbine fired by natural gas; the other is driven by steam. Both of the turbines are connected to generators.

Major equipment at the plant includes a combustion turbine fueled by natural gas; a heat recovery steam generator; a steam turbine driven by steam created from the heat of the gas turbine's exhaust; and an air-cooled condenser to cool and convert steam to water for re-use.

Deer Creek Station will operate about 12-16 hours per day, five days a week (more, if during peak load periods).



**Type:** Intermediate

**Fuel:** Natural Gas

**Location:** Elkton, SD

**Output:** 300 megawatts

# Public Awareness Handout

## How to recognize a gas pipeline leak

### LOOK

For dead or dying vegetation on or near a pipeline right-of-way in an otherwise green area. Also, look for dirt being blown or appearing to be thrown in the air.

### LISTEN

For a blowing or hissing sound.

### Six things to do if you suspect a gas pipeline leak

1. Turn off and abandon any equipment you may be operating.
2. Leave the area quickly.
3. Call **BASIN ELECTRIC POWER COOPERATIVE** immediately:  
**Call Toll Free: 1-800-339-5616**  
**or Call Collect: 1-701-223-0441**
4. Warn others of the situation.
5. Notify local authorities.
6. DO NOT attempt to operate any of the valves on the pipeline.

## In an emergency, or to report a suspected leak, please call:

**Basin Electric Power Cooperative**  
**1-701-223-0441 or**  
**toll free 1-800-339-5616**



**Know what's below.**  
**Call before you dig.**

### Before you dig, do your part:

- At least 48 hours before you dig, call your local one call center (1-800-781-7474) or (811).
- Wait for the site to be marked.
- Respect all markings.
- Dig with care.

For general information regarding Basin Electric's natural gas pipeline system, please call 605-397-2369 or 701-557-5895 or visit: [www.npms.phmsa.dot.gov](http://www.npms.phmsa.dot.gov) for a list of pipeline operators in your area.

### Did you know?

- It is a federal crime to remove or deface a pipeline marker sign.
- Damage from excavating equipment is the number one cause of pipeline accidents.
- Federal law requires pipelines to participate in a one call system. SD One Call requires 48 hours notification before performing excavations (1-800-781-7474 or 811).



## A MESSAGE FOR YOU ABOUT PIPELINE SAFETY



# Living and working near natural gas pipelines



**BASIN ELECTRIC POWER COOPERATIVE**  
A Touchstone Energy Cooperative

**REMEMBER: Call before you dig! We can help you avoid an accident.**



**Brookings County Planning, Zoning  
And Drainage**

601 4th St, Suite 105  
Brookings, SD 57006  
zoning@brookingscountysd.gov  
(605) 696-8350

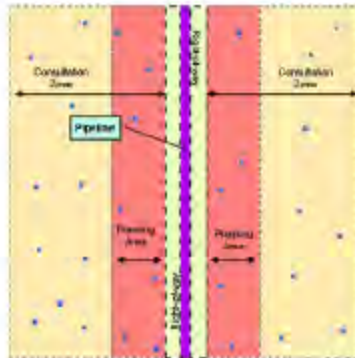
**LAND USE WITHIN THE  
TRANSMISSION PIPELINE RISK  
REDUCTION OVERLAY DISTRICT**

**Brookings County, SD**



**Q: Why did the Permit Office hand me this brochure?**

**A:** You have requested a building permit to excavate at a location that falls within the Transmission Pipeline Risk Reduction Overlay District Consultation or Planning Area. This brochure summarizes your legal duties per Brookings County Ordinance Section 24.01: Land Use in Transmission Pipeline Overlay District which you must perform to obtain a building permit in this location.



**Q: What is a Consultation Zone and what action is required?**

**A:** A Consultation Zone is an area extending 660 feet from each side of an existing transmission pipeline. The permit office will notify the pipeline operator of the permit request to excavate in that zone as well as of the type and size of the planned building. The property developer/owner must initiate a consultation with the transmission pipeline operator as early as possible in the development planning process. The consultation serves to: (1) protect pipelines by promoting adequate consideration of the potential safety impacts of the development on the transmission pipeline; and (2) raise awareness of the potential safety impacts of the pipeline on the development.

**Q: What is a Planning Area and what action is required?**

- A:** The size of the Planning Area depends on the specific characteristics of the pipeline:
- o Basin Electric Power Cooperative Pipeline: 262' with a 60' easement
  - o Northern Natural Gas Pipeline: 117' with a 70' easement

The purpose of the Consultation Zone is to enforce the requirement for communication between property developers/owners within Brookings County and transmission pipeline operators when new development is planned within this zone.

A detailed site plan indicating the correct location of the existing pipeline is required. Hand-rendered drawings suffice. Contact the South Dakota One Call and have the pipeline located and marked. Confirm or correct the actual location of the pipeline on the site drawing and provide the drawing to the permit office. Developer/owner must contact the pipeline operator and determine if the actual excavation will occur inside their right-of-way.

- o If the excavation will occur outside the pipeline operator's right-of-way, a building permit may be issued, and the permit office will notify the pipeline operator that a permit has been issued.
- o If the excavation will occur within the right-of-way, the developer /owner must obtain a written and signed encroachment agreement from the pipeline operator and submit it to the permit issuing office before the office can issue a permit. The office will notify the pipeline operator that the permit has been issued and will note the exact location of the approved construction or excavation.

**Q: How do I contact the operators?**

**A:** The operators can be contacted at:

- 1) The Basin Electric Power Cooperative Pipeline  
Basin Electric Power Cooperative  
C/O: Director of Right-of-Way  
1717 East Interstate Avenue  
Bismarck, ND  
24hr. Emergency #: 1-800-339-5616
- 2) The Northern Natural Gas Company Pipeline  
Northern Natural Gas Company  
C/O: Director of Right-of-Way  
1111 South 103rd Street  
Omaha, NE. 68124  
24hr. Emergency #: 1-888-367-6671

**Q: How and when do I call the South Dakota One Call center?**

**A:** Call 1-800-781-7474 or 811 at least 48 hours before any excavating to have the pipeline located and marked.

# Public Official Stakeholders

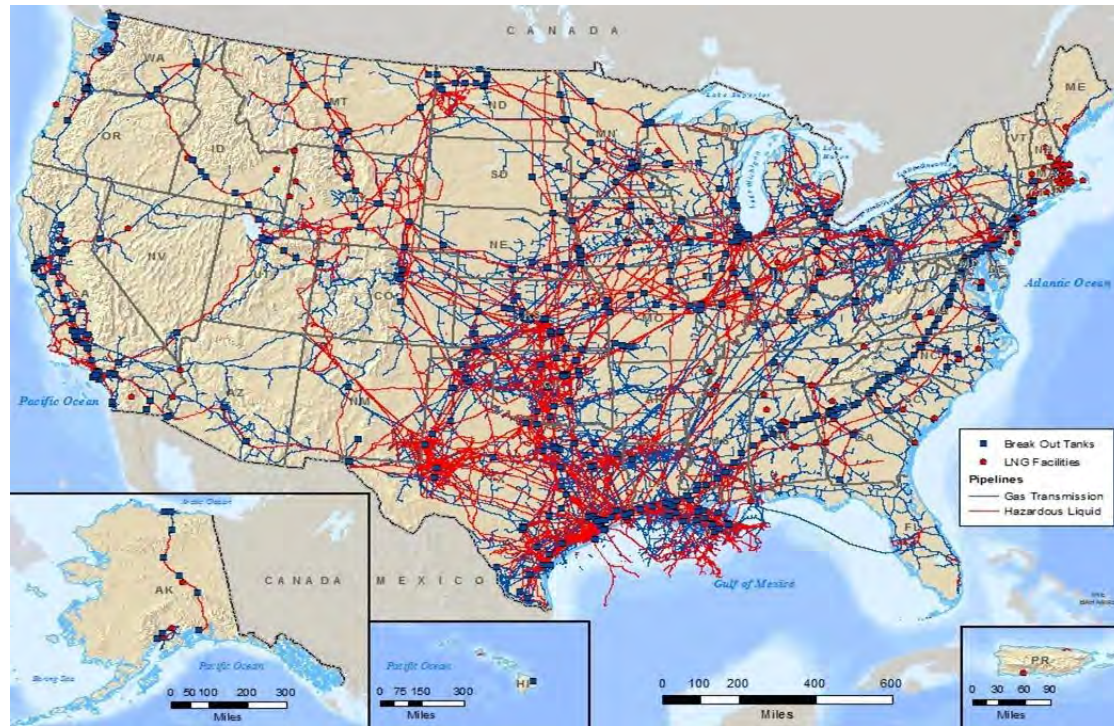
## Emergency Response Stakeholders

### Local Emergency Planning Committees

- Good opportunity to network with local first responder leadership
- Elected officials are an integral part of this organization
- Different funding mechanism

### Local Emergency Manager

- Required to do exercises on a yearly basis
- Exercises are done to FEMA requirements
- They can be your friend or .....



# Hazard Mitigation Planning:

Practices for Land Use Planning and Development near Pipelines

2015



**FEMA**



U.S. Department of Transportation  
**Pipeline and Hazardous Materials  
 Safety Administration**



# Thank You

Robert W. Hill, CEM®  
Brookings County  
County Development Department Director  
Emergency Management / Planning, Zoning and Drainage  
520 3<sup>rd</sup> Street, Suite 200  
Brookings, SD 57006  
rhill@brookingscountysd.gov