

# A Colorado State Law Prospective On One Call Exemptions



**J.D. MANISCALCO  
EXECUTIVE DIRECTOR  
COLORADO 811  
MARCH 14, 2013  
WEST PALM BEACH, FLORIDA  
PALM BEACH CONVENTION CENTER**

# Current One Call Exemptions



- **Membership**
  - Colorado Department of Transportation
  - Rail Road
- **Notification**
  - Farmers & Ranchers
  - Landscapers

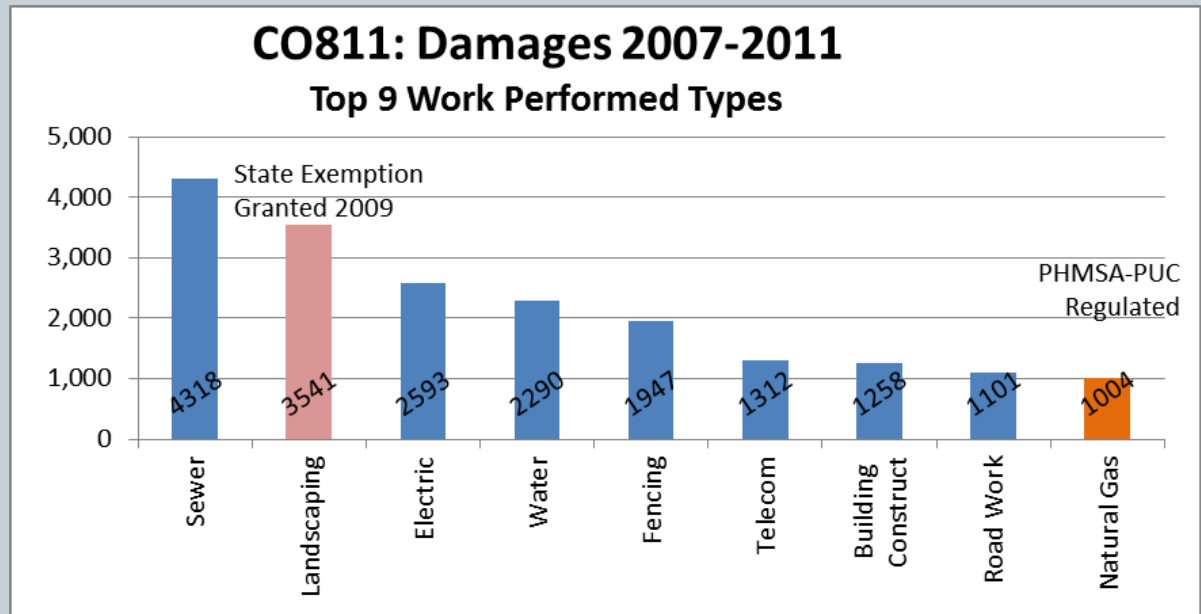
# Landscaping Exemptions



- **Colorado exemption defined under the State One-Call Law**
  - "EXCAVATION" - Shall **NOT INCLUDE ROUTINE MAINTENANCE** on existing planted landscapes.
  - "ROUTINE MAINTENANCE" means a regular activity that happens at least once per year on a existing planted landscape if earth is not disturbed at a **DEPTH OF MORE THAN TWELVE INCHES BY NON - MECHANICAL MEANS** or **FOUR INCHES BY MECHANICAL MEANS** and if the activities are not intended to permanently lessen the ground cover or lower the existing ground contours
  - Effective 2009

# Damages by Type of Work Performed

**Sewer Work and Landscape Work** results in the greatest number of damages each year



Natural Gas operators are regulated by PHMSA/PUC. NOTE low occurrence of damages compared to other work types.

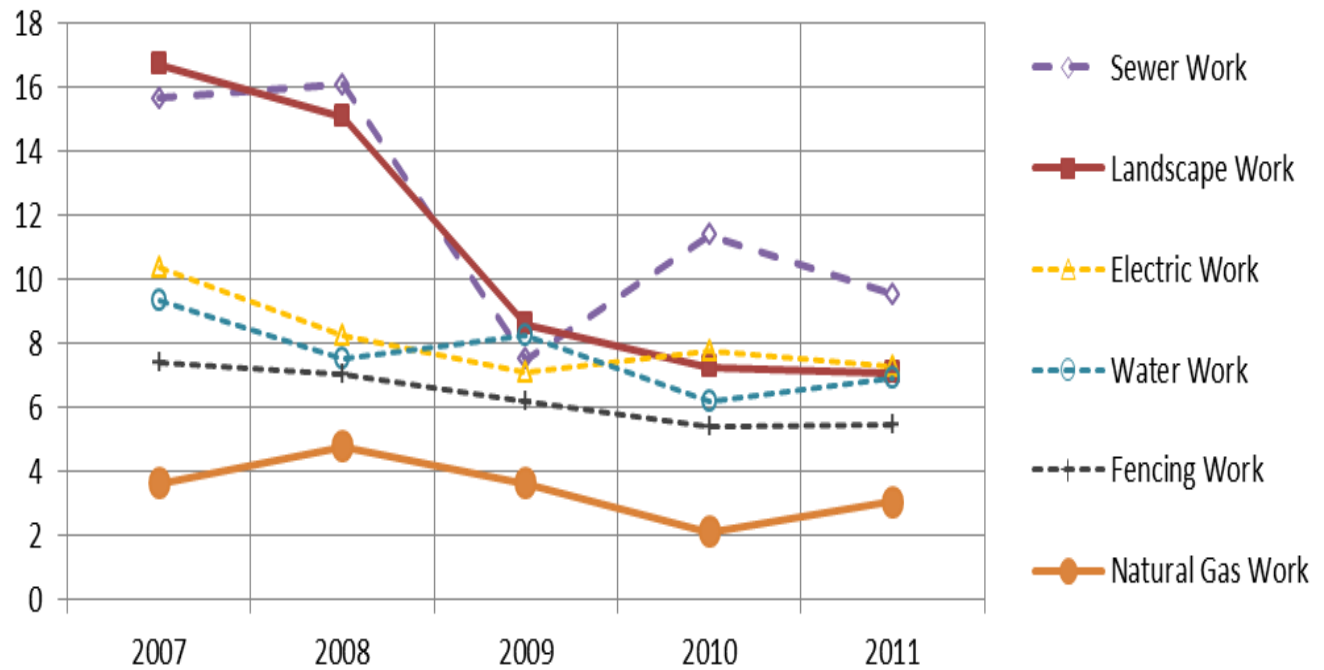
# What Happen Post Landscape Exemption?



For Landscape Work:

Damages/10k Requests Has Decreased Each Year Since 2008

## CO811: Damages per 10,000 Requests Top 5 Work Performed Types and Natural Gas

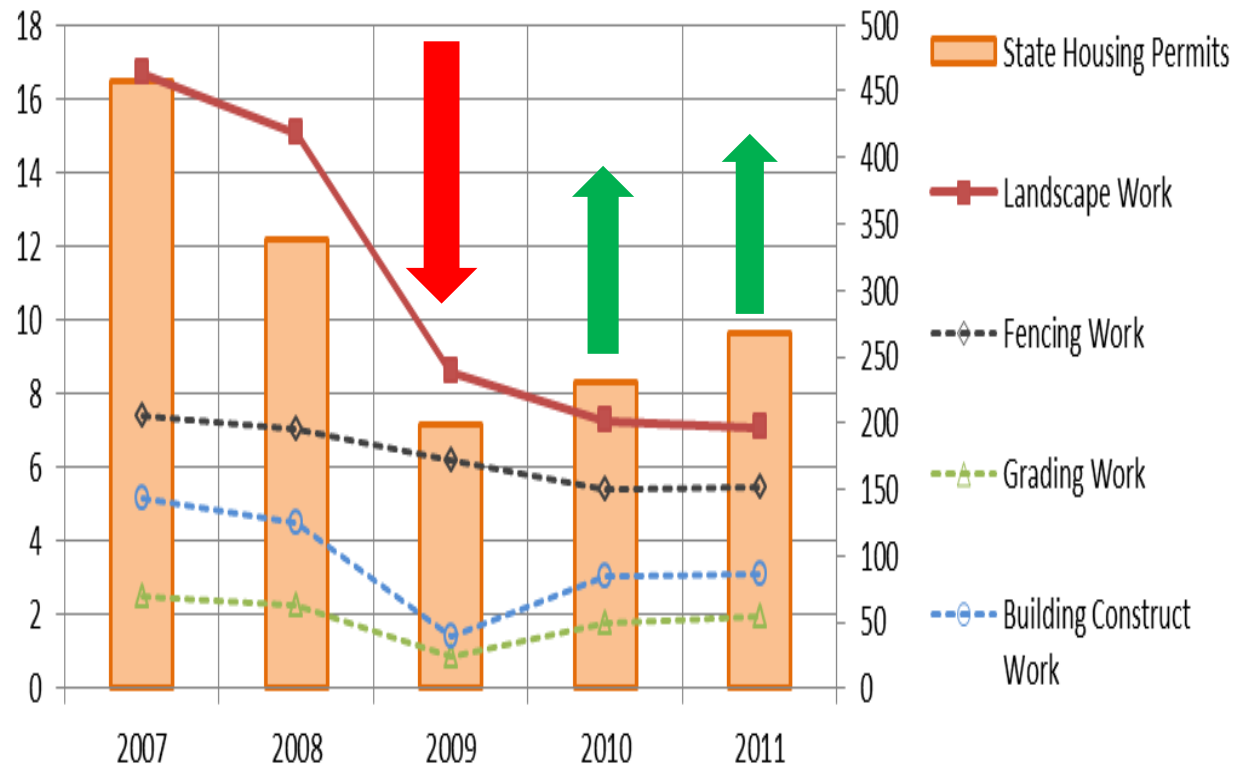


# What Happen Post Landscape Exemption?

The Decrease In The Metric Has Been More Pronounced For Landscape Work As Compared To Other Types Of Construction Work

## CO811: Damages per 10,000 Requests

### Construction Related Work Performed Types



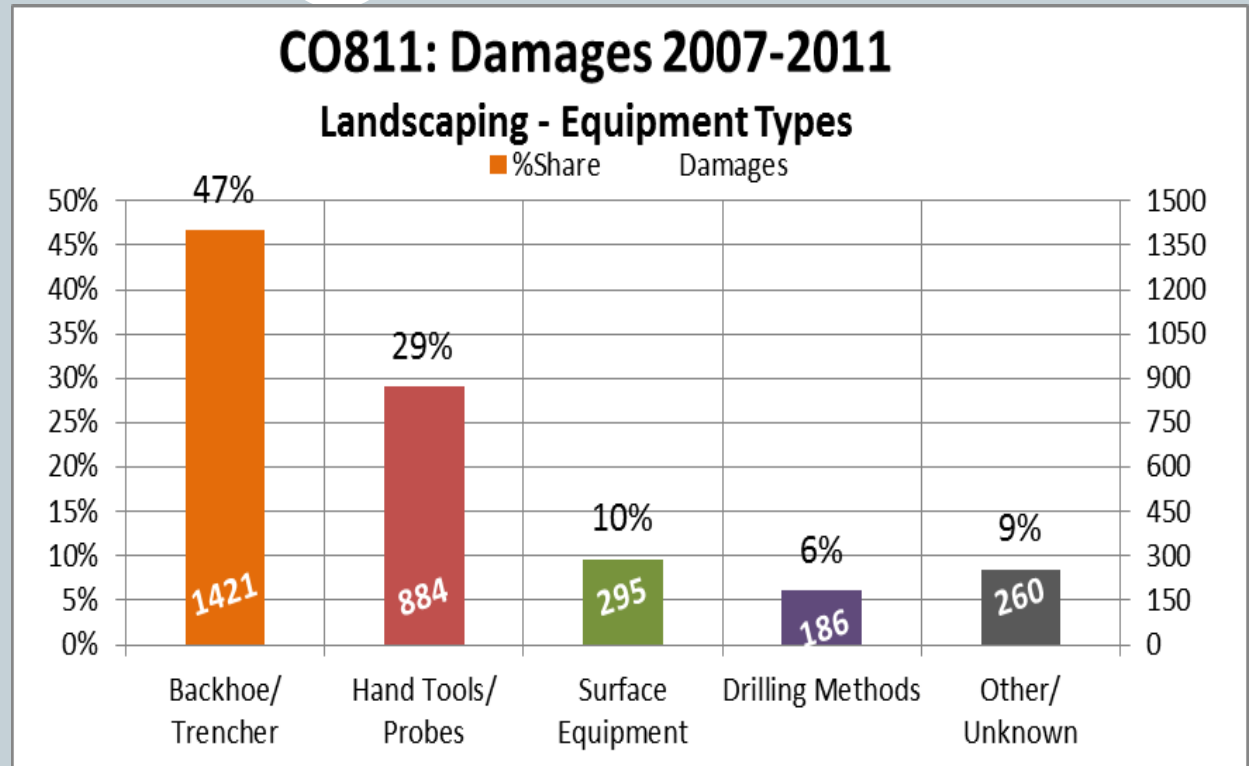
# Change in Excavator Habits



From 2007-2011:

On 47% of damages,  
Backhoe/ Trencher  
was used

On 29% of damages,  
HandTool/Probe was  
used



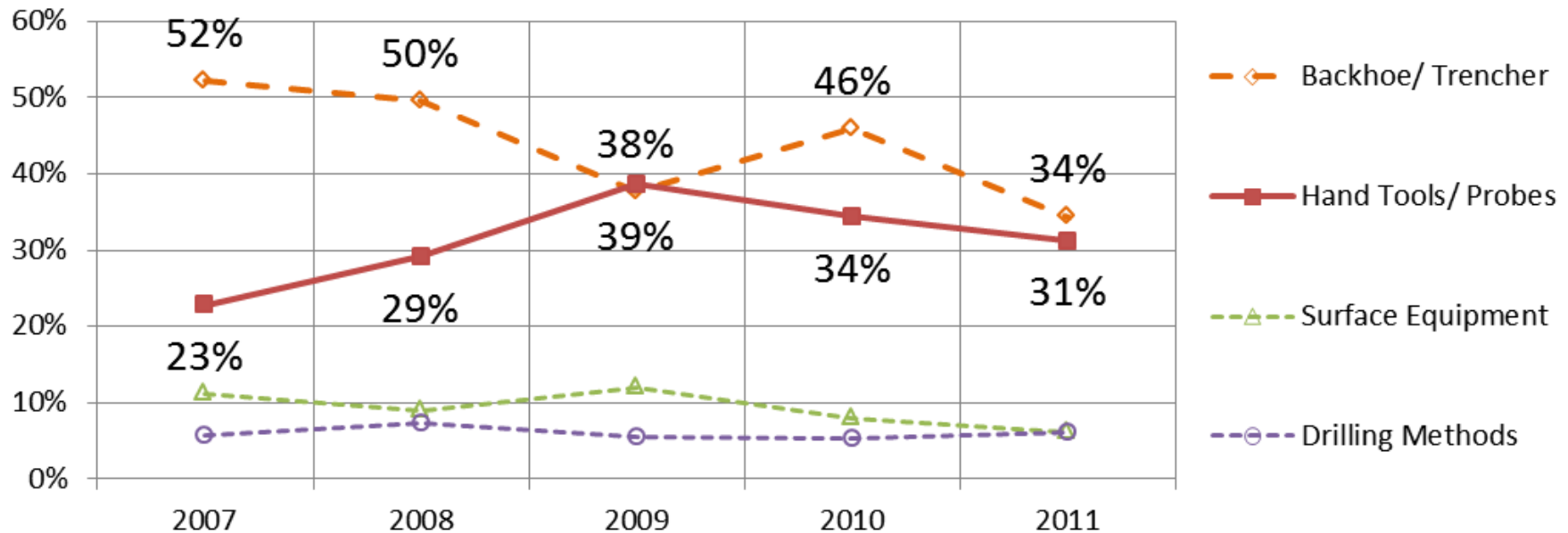
**QUESTION:** Did the Exemption for Landscapers encourage excavators to change their habits when digging near buried facility?

# Change in Excavator Habits

- Excavator Habits Appear To Have Changed
  - A Smaller Share of Damages Resulted When A Backhoe/ Trencher Was Used

## CO811: Landscaping Damages 2007-2011

### Share of Equipment Types





# Colorado One Call Law Exemptions

## Summary



- 2007-08 Landscaping Work - Results in 2<sup>nd</sup> largest share of damages
- 2009 Landscaping Work - Exemption given for “Routine Maintenance”
- 2010 Landscaping Work - %share of damages decreased in 2009 & 2010
- 2011 Landscaping Work - %share of damages decreased
- Landscaping Work - results in 2<sup>nd</sup> largest %share of damages (drops to 10%)
- Landscaping Damage Metric - drops from 17- 7 Damages/10,000 Requests
- Type of Equipment - Backhoe/Trencher damages drop from 52% to 34%

# Conclusions & Concerns



## ■ Conclusion

- Data Identifies A Significant Reduction In Damage Metric For Landscape Work
- %Share Of Backhoe/Trencher Damages Decrease After The Landscape Exemption

## ■ Concerns

- Limited Data Set For Assessing Impact (2008-2011, 4 Years)
- Was All Damage Data Reported Each Year By Operators ?
- Numerous Causation Factors Occurring
- Awareness Efforts & Stakeholder Education Conducted By All Damage Prevention Stakeholders
- Awareness Increases – Landscaping Industry Exerts Effort To Change Law

# Consider Alternative View



- **Exemption Itself Is Not The Likely Cause Of The Improvement!**
- **Many In Landscape Industry Felt Law Did Not Pertain To Them, So Lack Of One Call Requests**
- **Their Efforts To Alter Law Brought To Forefront Non-Compliance And Poor Results Of Non-Compliance**
- **Many Landscape Firms Targeted For Awareness And Education By Stakeholders**
- **Damage Report Validated The Need For Change**

# Consider Alternative View



- **Industry Efforts To Change Law Encouraged Landscapers To Alter Attitudes & Habits**
- **Awareness & Education By Stakeholders Encouraged And Resulted In Changes**
- **2011 Natural Gas Damages/10,000 Requests = 2**
- **2011 Landscape Damages/10,000 Requests = 7**