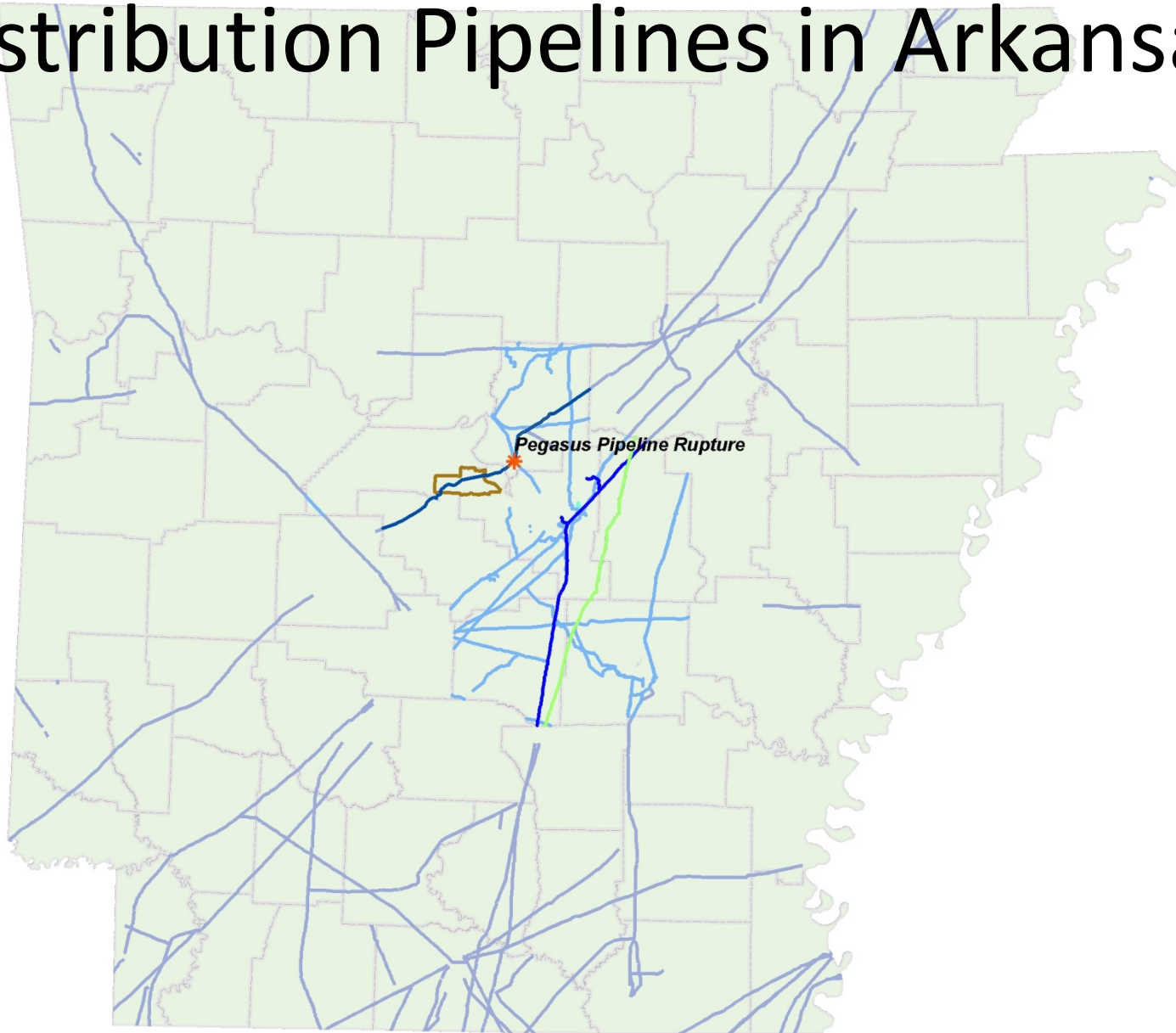


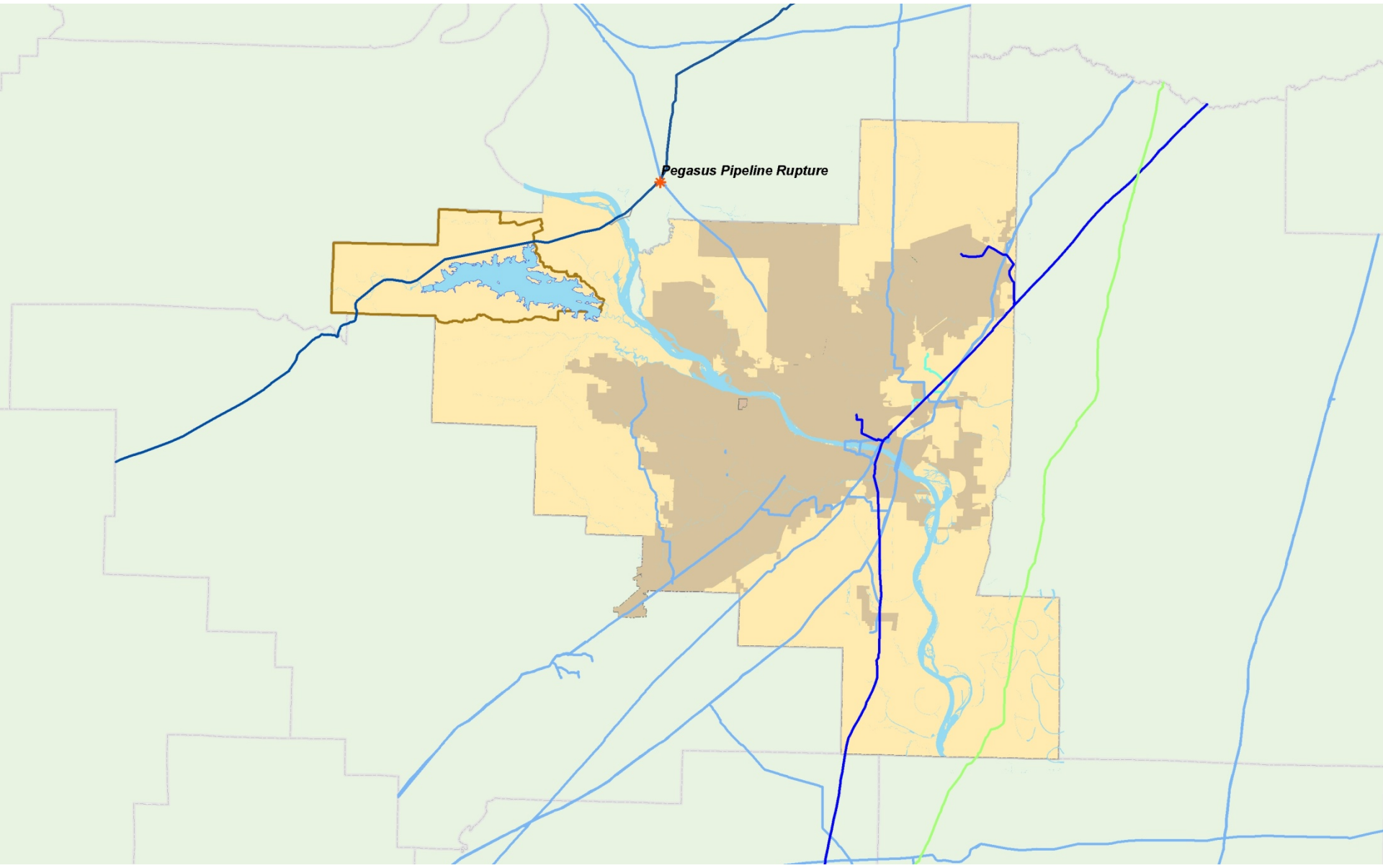
# PHMSA Public Awareness Workshop

Land Use Planning

# Distribution Pipelines in Arkansas



# Pulaski County, Arkansas





# Mayflower, Arkansas Oil Spill



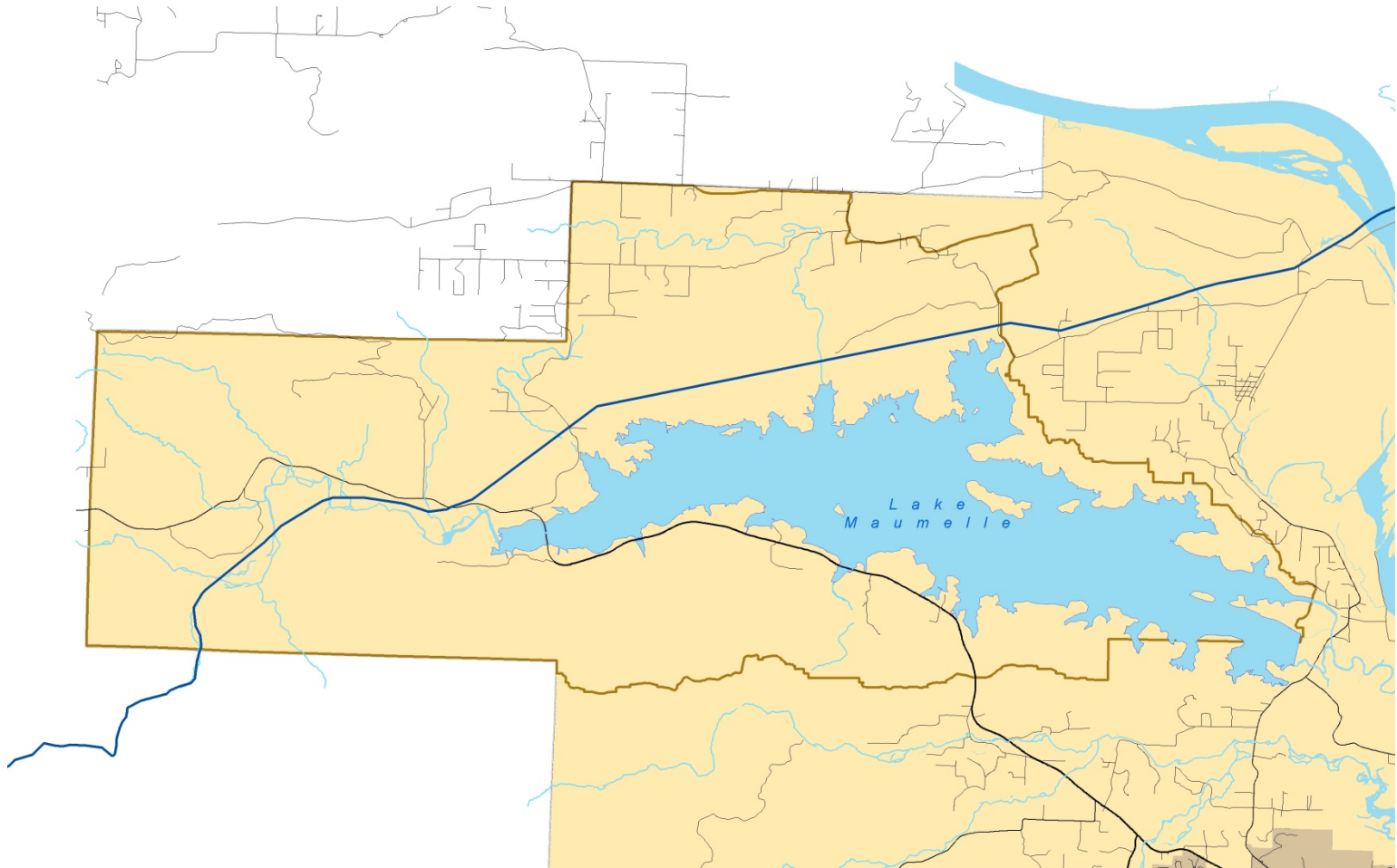


# Pegasus Pipeline Rupture



Duncan Law Firm

# Lake Maumelle Watershed



# Land Planning

# What is a land planner's role in public safety near transmission pipelines?

- To assist in enacting legislation to create land use buffers
- To assist in the appropriate location of the pipeline

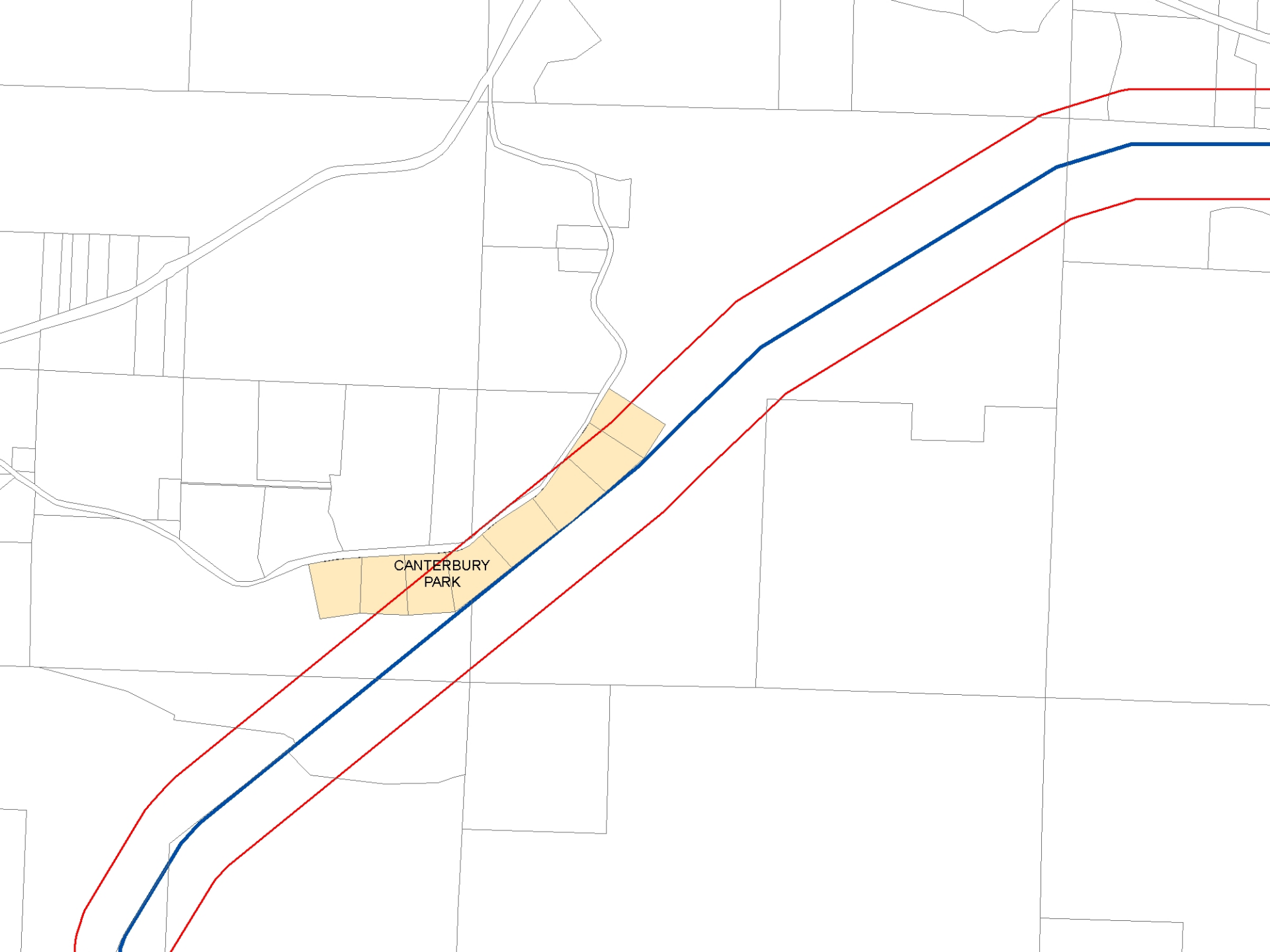


# **What actions can land planners take to improve public safety near transmission pipelines?**

- To assist/encourage appropriate development near an existing pipeline
- To educate developers and the public

# What information/support do land planners need from pipeline operators to successfully implement these actions?

- To be notified of locations, modifications and the contents to be transmitted
- To be provided accurate GIS data
  - Horizontal Positional Accuracy Value: +/- 500 feet (Source: NPMS METADATA)



CANTERBURY  
PARK

# **What messages/actions detract from influencing a land planner to use land planning tools to reduce the risk of transmission pipelines to their community?**

- Lack of communication both internally and externally
- Political resistance
- Lack of education
- Lack of standards regarding setbacks from a hazardous material pipeline
- The fact that private property suffers twice as if setbacks are required; first by the easement on the land and second by having a setback imposed on their property