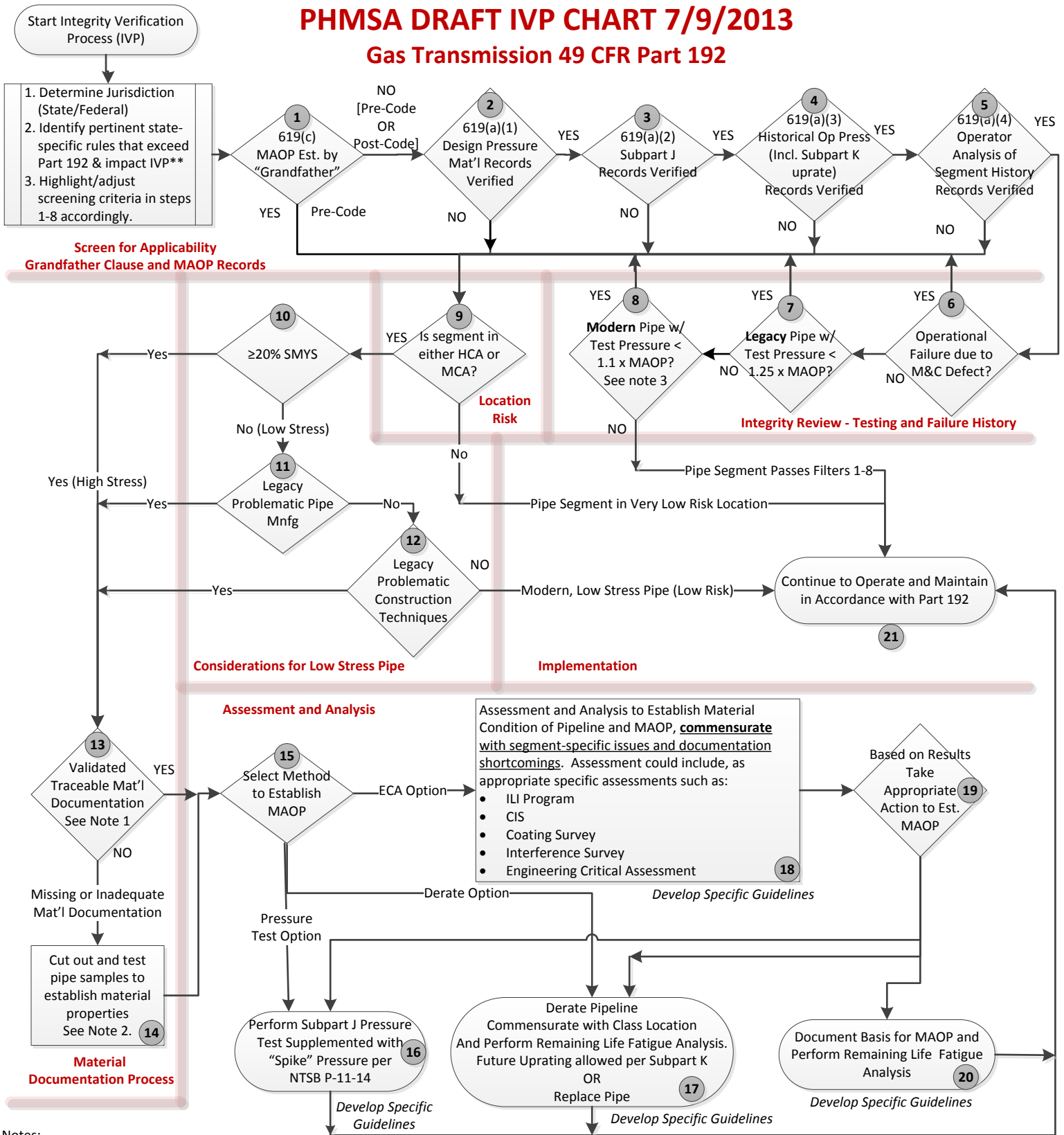


PHMSA DRAFT IVP CHART 7/9/2013

Gas Transmission 49 CFR Part 192



Notes:

- Legacy Pipe** means LFERW, SSAW, Flash Weld (AO Smith), or pipe w/ joint factor < 1 (e.g., lap welded pipe) regardless of date of manufacture.
- Modern Pipe** means post-code pipe not manufactured with any techniques listed under Legacy Pipe.
- Legacy Problematic Construction Techniques** means wrinkle bends, miter > 3 degrees, Dresser Couplings, non-standard fittings, arc welds, oxyacetylene welds, bell spigots, puddle weld repairs, etc.
- Moderate Consequence Area (MCA)** means non-HCA pipe in Class 4, 3, 2, locations & Class 1 locations with [TBD] houses/sites in PIR.
- Note 1:** Required for Pipe, Fittings, Valves, Flanges & Components.
- Note 2:** Validated mat'l properties req'd for X42 and greater & pipe ≥ 2" OD if on the mainline.
- Note 3:** Revise 619(a) to require min. 1.25 MAOP pressure test for new pipe
- Note 4:** Validation of MAOP per 619(d), Alt MAOP, not considered a problem and not addressed in IVP requirements

PROPOSED DEADLINES FOR COMPLETING INTEGRITY VERIFICATION						
Location	≥ 50% SMYS		20 – 50% SMYS		< 20% SMYS	
	Legacy	Modern	Legacy	Modern	Legacy	Modern
HCA	TBD	TBD	TBD	TBD	TBD	na
MCA Class 4	TBD	TBD	TBD	TBD	TBD	na
MCA Class 3	TBD	TBD	TBD	TBD	TBD	na
MCA Class 2	TBD	TBD	TBD	TBD	TBD	na
MCA Class 1	TBD	TBD	TBD	TBD	TBD	na

*Some state requirements exceed Part 192. For example:

- Pressure test at 150% MAOP to establish MAOP, or
- All gas transmission (GT) to be classified and constructed to Class 4 requirements, or
- Define as GT if MAOP>125 psig, etc.